

Coronary Stent System for Drug Application

Yukon[®] Choice 4^{DES}

The polymer-free
DES solution

*Translumina –
Allows natural healing*



translumina[®]

Yukon[®] Choice 4^{DES}

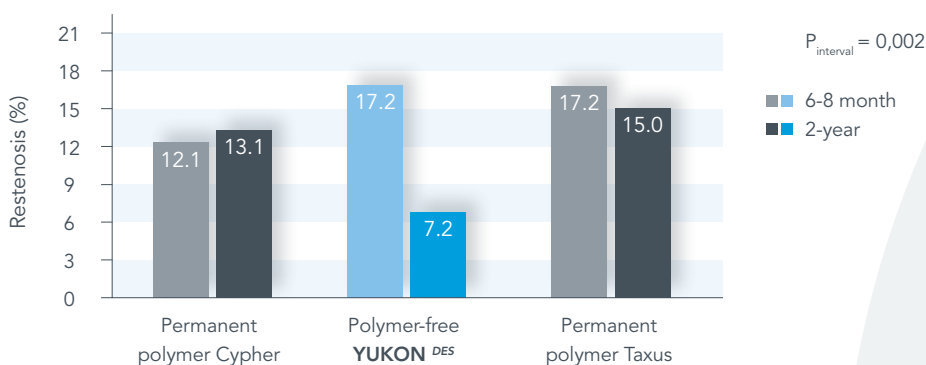
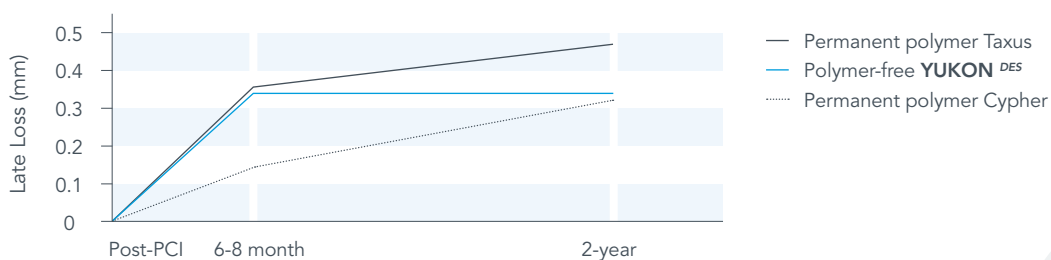
Excellent Clinical Outcome

The polymer-free Translumina **YUKON^{DES}** drug-eluting stent, coated with pure Rapamycin (Sirolimus), has an excellent history of pre-clinical and clinical results. Animal trials and a human dose-finding study have built the platform for the polymer-free, stent-based delivery of Rapamycin [1,2]. In two independent trials the **YUKON^{DES}** showed angiographic and clinical equivalence with the TAXUS stent after 6-months follow-up [3,4].

Latest clinical data, published by R.Byrne et al [5], show the excellent **long-term outcome** of the **YUKON^{DES}** in a unique trial design, comparing the angiographic outcome after 6 months with the 2 year outcome in more than 2500 patients:

- stable late loss (LL) between 6 months and 2 years for the **YUKON^{DES}**
- late catch-up in LL for the polymer-based DES (Cypher, Taxus)
- very low angiographic restenosis after 2 years for the **YUKON^{DES}**
- delayed angiographic restenosis for the polymer-based DES

Angiographic performance of the **YUKON^{DES}**



Data published by Byrne et al [5]

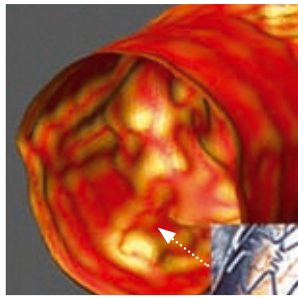
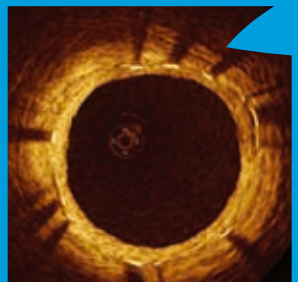
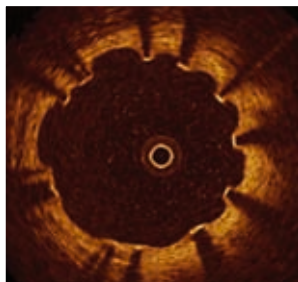
Translumina – Allows natural healing

In the first randomized, controlled optical coherence tomography (OCT) study M. Dalby et al showed **perfect stent strut coverage** for the Translumina Rapamycin-coated **YUKON^{DES}** 3 months after implantation [6]. The Study compared the polymer-free **YUKON^{DES}** with the polymer-based Cypher and showed statistically significant differences in stent strut coverage and stent strut protrusion in favour of the polymer-free **YUKON^{DES}**.

Clinical benefit of a DES with the long-term safety of a BMS!

**The OCT cross section of the YUKON^{DES}
in comparison to one of the competitors
after 3 months follow up [6]**

The polymer-free
DES solution



Competitor

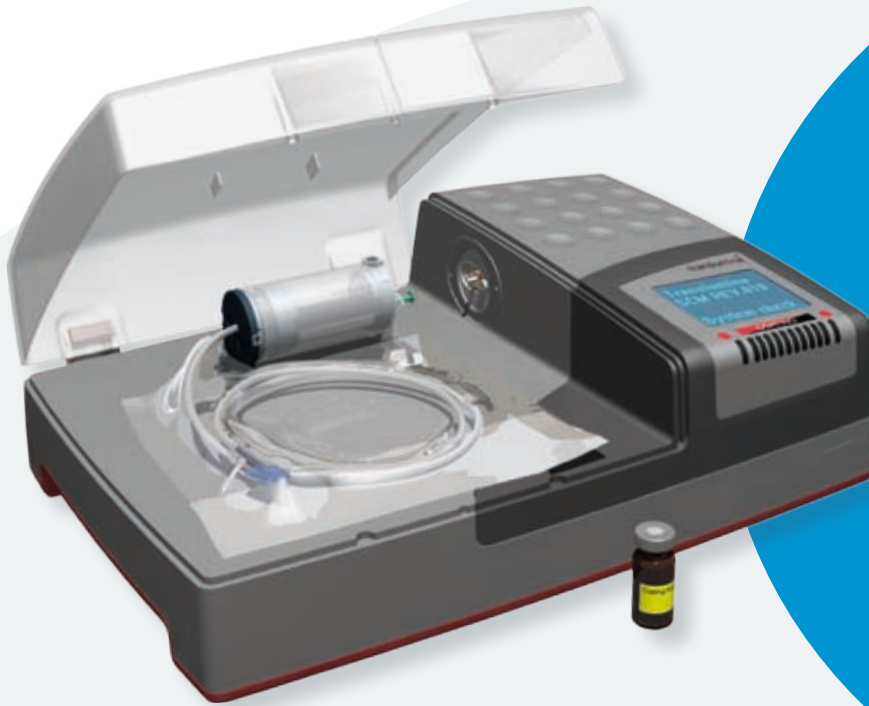
YUKON^{DES}

Literature

- (1) YUKON Animal study (comparison with Cypher):
R. Wessely et al, Arteriosclerosis, Thrombosis and Vascular Biology, 2005; 25, 1-6
- (2) Dose-finding study (comparison with BMS):
J. Hausleiter et al, European Heart Journal, 2005; 26, 1475-1481
- (3) ISAR-TEST study (comparison with Taxus): J. Mehili et al, Circulation, 2006; 113, 273-279
- (4) Retrospective Real-World study (comparison with Taxus):
J. Rief et al, Cath. and Cardiovascular Interventions, 2008; 71, 333-339
- (5) Long-term angiographic follow-up (comparison with Cypher, Taxus):
R. Byrne et al, JACC Intervention, 2009; 2, 291-299
- (6) Randomized OCT study (comparison with Cypher):
M. Dalby et al, JACC Intervention, 2009; 2, 437-444

Yukon® Choice 4^{DES}

Technical data and handling



The polymer-free coating – step by step

- Standard connectors for power supply and compressed sterile air
- Easy display-aided handling
- Multi language menu
- Optimised drug injection with syringe
- Fast and sterile coating procedure
- Sterile storage of the coated stent (data for rapamycin available)
- Technical support
- Liability insurance for the coated stent (for further information please contact translumina)

The new Cartridge with Yukon® Choice 4^{DES}

- Sterile and safe storage
- Cartridge equipped with integrated sterile filter
- Easy handling
- Innovative Coating Technology



The polymer-free DES now with a lot of new features

The new stent delivery system



The new designed luer

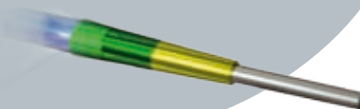
The transparent luer has a positive, tactile feel assisting in navigation of the system. It is designed with an integrated protection to minimize any kinking.

The new distal shaft

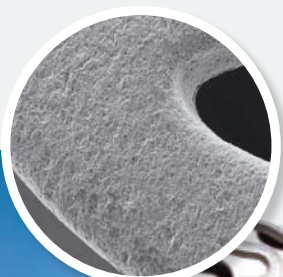
Our high performance shaft consisting of a new material provides excellent pushability and kink resistance. This feature allows for high manoeuvrability.

The new flexible tip

The soft tip material combined with an improved robust segment ensures perfect crossability and trackability. This feature allows easy access to all lesions.



SEM of the microporous stent surface



Stent features

Unique stent surface

The micro-porous stent surface, called PEARL Surface, favours better endothelialisation, which is essential in avoiding thrombosis and restenosis.

Stent design

- homogeneous expansion
- increased radial force
- good side branch access

Low stent profile

- flexible and deliverable



Technical specifications of the stent

Medical Stainless Steel, 316 LVM, Surface containing micro-pores	
Crossing profile	0,035" / 0,89 mm (Ø 2,5 mm)
Strut thickness	0,0034" / 87 µm (Ø 2,5 mm)
Metallic surface area	16 - 18%
No foreshortening	
Balloon marker material	Platinum / Iridium
Entry profile	0,016" / 0,41 mm
Proximal shaft diameter	1,9 F
Distal shaft diameter	2,7 F
Recommended guide wire	0,014"
Guiding Catheter	min. 5 F



Yukon[®] Choice 4^{DES}

Product matrix / Ordering information*

new sizes available

Small vessel sizes

Balloon Ø [mm]	Stent length [mm] & Article number							
	8	12	16	18	21	24	28	32
Ø 2,00	T-CMF2008C	T-CMF2012C	T-CMF2016C	T-CMF2018C	T-CMF2021C	T-CMF2024C	T-CMF2028C	T-CMF2032C
Ø 2,25	T-CMF22508C	T-CMF22512C	T-CMF22516C	T-CMF22518C	T-CMF22521C	T-CMF22524C	T-CMF22528C	T-CMF22532C
Ø 2,50	T-CMF2508C	T-CMF2512C	T-CMF2516C	T-CMF2518C	T-CMF2521C	T-CMF2524C	T-CMF2528C	T-CMF2532C

Medium vessel sizes

Balloon Ø [mm]	Stent length [mm] & Article number								
	8	12	16	18	21	24	28	32	40
Ø 2,75	T-CMF27508C	T-CMF27512C	T-CMF27516C	T-CMF27518C	T-CMF27521C	T-CMF27524C	T-CMF27528C	T-CMF27532C	T-CMF27540C
Ø 3,00	T-CMF3008C	T-CMF3012C	T-CMF3016C	T-CMF3018C	T-CMF3021C	T-CMF3024C	T-CMF3028C	T-CMF3032C	T-CMF3040C
Ø 3,50	T-CMF3508C	T-CMF3512C	T-CMF3516C	T-CMF3518C	T-CMF3521C	T-CMF3524C	T-CMF3528C	T-CMF3532C	T-CMF3540C
Ø 4,00	T-CMF4008C	T-CMF4012C	T-CMF4016C	T-CMF4018C	T-CMF4021C	T-CMF4024C	T-CMF4028C	T-CMF4032C	T-CMF4040C

* Please contact our customer service for available sizes

Compliance chart

Ballon Ø [mm]	Inflation pressure [bar or 10 ⁻⁵ Pascal]															
					NP							RBP				
	6	7	8	9	10	11	12	13	14	15	16	17	18	19*	20*	
Ø 2,00	1,90	1,94	1,97	2,00	2,03	2,07	2,10	2,13	2,17	2,20	2,23	2,27	2,35	2,38	2,41	
Ø 2,25	2,15	2,18	2,21	2,25	2,28	2,32	2,35	2,38	2,42	2,45	2,49	2,52	2,55	2,59	2,62	
Ø 2,50	2,40	2,43	2,47	2,50	2,54	2,57	2,60	2,64	2,67	2,71	2,74	2,77	2,81	2,84	2,88	
Ø 2,75	2,65	2,68	2,72	2,75	2,78	2,82	2,85	2,88	2,92	2,95	2,98	3,01	3,28	3,31	3,34	
Ø 3,00	2,89	2,93	2,97	3,00	3,04	3,08	3,12	3,15	3,19	3,23	3,26	3,30	3,34	3,37	3,41	
Ø 3,50	3,37	3,42	3,46	3,50	3,54	3,58	3,63	3,67	3,71	3,75	3,79	3,84	3,88	3,92	3,96	
Ø 4,00	3,85	3,90	3,95	4,00	4,05	4,10	4,16	4,21	4,26	4,31	4,36	4,41	4,46	4,51	4,56	

* calculated



© 2009 Translumina GmbH

All Rights Reserved

® YUKON, YUKON Choice, PEARL Surface and translumina are registered trademarks of translumina GmbH

Please refer to the Instruction for Use supplied with these devices for indications, contraindications, adverse effects, suggested procedures, warnings and precautions.

Translumina GmbH | Neue Rottenburger Strasse 50
72379 Hechingen | Germany | info@translumina.de |
t + 49 7471 98 94 - 0 | f + 49 7471 98 94 - 360

