

Cobalt Chromium Coronary Stent System

# Yukon<sup>®</sup> CC

*Translumina -  
Crossing all lesions*



heart for the heart

translumina<sup>®</sup>

# Yukon<sup>®</sup> CC

## Micro-porous surface that matters

The Translumina **Yukon<sup>®</sup> CC** represents a new generation stent system technology based on a Cobalt Chromium alloy.

It is the first CoCr Stent with an unique micro-porous surface.

The Yukon CC is in continuation of the Translumina Surface philosophy, improving healing and biocompatibility of the implant.

For detailed information see also literature [1,2,3].

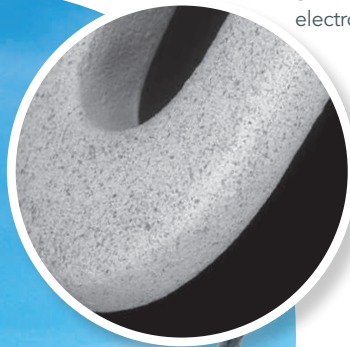
### Unique stent surface

The Translumina micro-porous stent surface, called **PEARL Surface**, favours better endothelialisation, which is essential in avoiding thrombosis and restenosis.

### Strut thickness

With a low strut thickness of approx. 68µm the stent has excellent healing properties.

SEM (scanning electron microscope)



### Surface features

- approx. 1 million pores per cm<sup>2</sup>
- average micro pore depth of approx. 2 µm
- 100% pore coverage of the surface

### References

- <sup>[1]</sup> Dibra et al, Catheterization and Cardiovascular Interventions 2005, 65, 374-380; Results to 6 months, n=100 BMS with rough surface vs. n=100 with polished surface
- <sup>[2]</sup> Palmaz et al, Journal of Vasc. Surg., 2002, 36, 2001-09.
- <sup>[3]</sup> Fitzgerald et al, Expert Opin. Drug Deliv. 2007, 4, 287-295.
- <sup>[4]</sup> Mortier et al, EuroInterv.2008;4,391-396

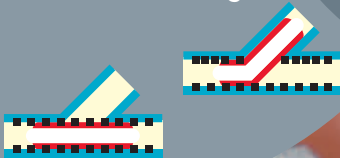


# The new high tech Cobalt Chromium Stent System

A CoCr Stent -  
designed for all lesions

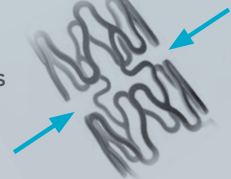
## Bifurcation stenting

With a cell circumference of up to 18,5mm the Yukon CC allows perfect side branch access which is essential for Bifurcation stenting <sup>[4]</sup>.



## 2-Connector-Design

The new design with only 2 connector struts guarantees maximum flexibility and side branch access.

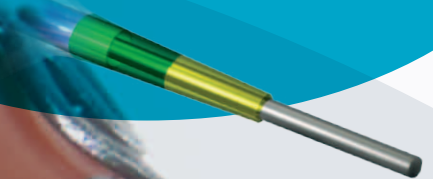


## The suitable catheter...

The luer is designed with an integrated kinking protection.



The flexible tip ensures perfect crossability and trackability.



## Technical data & Stent features

Cobalt Chromium Alloy (L605)

Surface containing micro-pores

Crossing profile (Ø 2,5 mm)	0,035" / 0,89 mm
Strut thickness (Ø 2,5 mm)	0,0027" / 68µm (SV), 0,0031" / 79µm (MV)

Metallic surface area	9,1 - 14,9%
Balloon marker material	Platinum / Iridium
Entry profile	0,016" / 0,41 mm
Proximal shaft diameter	1,9 F
Distal shaft diameter	2,7 F
Recommended guide wire	0,014"
Guiding Catheter	min. 5 F

# Yukon<sup>®</sup> CC

## Ordering information\*

### Small vessel design (SV)

product matrix

Balloon Ø [mm]	Stent length [mm] & Article number							
	8	12	16	18	21	24	28	32
Ø 2,00	T-CMG2008	T-CMG2012	T-CMG2016	T-CMG2018	T-CMG2021	T-CMG2024	T-CMG2028	T-CMG2032
Ø 2,25	T-CMG22508	T-CMG22512	T-CMG22516	T-CMG22518	T-CMG22521	T-CMG22524	T-CMG22528	T-CMG22532
Ø 2,50	T-CMG2508	T-CMG2512	T-CMG2516	T-CMG2518	T-CMG2521	T-CMG2524	T-CMG2528	T-CMG2532

### Medium vessel design (MV)

Balloon Ø [mm]	Stent length [mm] & Article number								
	8	12	16	18	21	24	28	32	40
Ø 2,75	T-CMG27508	T-CMG27512	T-CMG27516	T-CMG27518	T-CMG27521	T-CMG27524	T-CMG27528	T-CMG27532	T-CMG27540
Ø 3,00	T-CMG3008	T-CMG3012	T-CMG3016	T-CMG3018	T-CMG3021	T-CMG3024	T-CMG3028	T-CMG3032	T-CMG3040
Ø 3,50	T-CMG3508	T-CMG3512	T-CMG3516	T-CMG3518	T-CMG3521	T-CMG3524	T-CMG3528	T-CMG3532	T-CMG3540
Ø 4,00	T-CMG4008	T-CMG4012	T-CMG4016	T-CMG4018	T-CMG4021	T-CMG4024	T-CMG4028	T-CMG4032	T-CMG4040

\* Please contact our customer service for available sizes

## Compliance chart

Ballon Ø [mm]	Inflation pressure [bar or 10 <sup>-5</sup> Pascal]																
						NP						RBP					
	6	7	8	9	10	11	12	13	14	15	16	17	18	19	20		
Ø 2,00	1,83	1,87	1,90	1,93	1,96	2,00	2,03	2,06	2,10	2,13	2,16	2,20	2,23	2,26	2,29		
Ø 2,25	2,08	2,11	2,14	2,18	2,21	2,25	2,28	2,31	2,35	2,38	2,42	2,45	2,48	2,52	2,55		
Ø 2,50	2,33	2,36	2,40	2,43	2,47	2,50	2,53	2,57	2,60	2,64	2,67	2,70	2,74	2,77	2,81		
Ø 2,75	2,58	2,61	2,65	2,68	2,71	2,75	2,78	2,81	2,85	2,88	2,91	2,94	2,98	3,01	3,04		
Ø 3,00	2,81	2,85	2,89	2,92	2,96	3,00	3,04	3,07	3,11	3,15	3,18	3,22	3,26	3,29	3,33		
Ø 3,50	3,29	3,34	3,38	3,42	3,46	3,50	3,55	3,59	3,63	3,67	3,71	3,76	3,80	3,84	3,88		
Ø 4,00	3,75	3,80	3,85	3,90	3,95	4,00	4,06	4,11	4,16	4,21	4,26	4,31	4,36	4,41	4,46		

CE 0124

© 2010 Translumina GmbH

All Rights Reserved

® YUKON, PEARL Surface and translumina are registered trademarks of translumina GmbH

Please refer to the Instruction for Use supplied with these devices for indications, contraindications, adverse effects, suggested procedures, warnings and precautions.

Translumina GmbH | Neue Rottenburger Strasse 50  
72379 Hechingen | Germany | info@translumina.de |  
t + 49 7471 98 94 - 0 | f + 49 7471 98 94 - 360

